

**VIPER** LIGHT BARS  
*By LIGHT FORCE*

**USER INSTRUCTIONS**

# **VIPER LIGHT BARS**



***Light FORCE***<sup>®</sup>

Viper Light Bars by Lightforce utilise high output LEDs tuned within the reflectors to produce improved performance unparalleled in their class.

Take on your next adventure with the new range of Lightforce VIPER Light Bars. The modern screwless front bezel design will compliment your vehicle's factory look, and the improved performance provides more light output than ever before. Other features include a lightweight slimline housing, new low mount bracket options, and RFI shielding for reduced radio interference.

All Lightforce VIPER Light Bars are supplied complete with end mounts, rear slide mounts, and full harness with 8-pin switch adaptor, allowing a Plug & Play solution into the range of Lightforce factory style switches.

## KIT CONTENTS

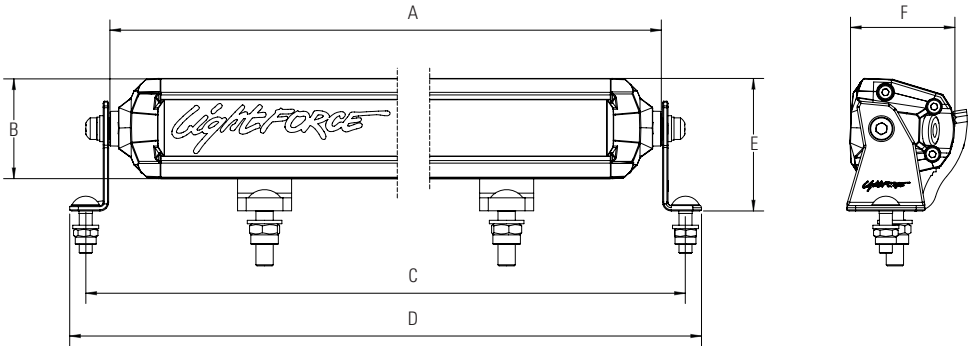
- 1 x Lightforce Light Bar
- 2 x Stainless steel side brackets and fixings
- 2 x Rear slide mount brackets and fixings (6-20" Bars) or,  
3 x Rear slide mount brackets and fixings (30" Bars) or,  
4 x Rear slide mount brackets and fixings (40-50" Bars)
- 1 x Complete "smart" wiring harness including relay and 8 pin switch connector
- Allen key
- User instructions.

## KEY FEATURES

- Durable AkzoNobel® powder coat finish, tested to Australian Standard AS1580, for protection against UV and salt water
- IP68 rated to protect against water and contaminant ingress
- Up to 25% slimmer & lighter than previous model Lightforce Bars
- Up to 25% improved performance over previous Lightforce Bars
- Amber lens models available
- Waterproof membrane with mechanical seal
- Over, under and reverse voltage protection
- Pulse width modulation thermal management circuitry
- Electromagnetic (EMC) and radio frequency (RFI) reduction circuitry
- Stainless steel side brackets, mounting hardware and slide mounts included
- Comprehensive "smart" wiring harness with 8 pin connector, bridge rectifier and illuminated switch
- Deutsch style waterproof plugs
- RoHS certified
- 5500K colour temperature.

For more information about Lightforce VIPER Light Bars specifications and the extensive range of switches and accessories visit [lightforce.com](http://lightforce.com)

## SINGLE ROW DIMENSIONS



SKU	Description	A	B	C	D	E	F	Mass inc. Brackets
LFLB6S	6" Single Clear							
LFLB6SA	6" Single Amber	201mm	46mm	226mm	241mm	61mm	47mm	617g
LFLB6SUS	6" Single Clear USA	7.91in	1.81in	8.90in	9.49in	2.40in	1.85in	21.76oz
LFLB6SAUS	6" Single Amber USA							
LFLB10S	10" Single Clear							
LFLB10SA	10" Single Amber	304mm	46mm	329mm	344mm	61mm	47mm	798g
LFLB10SUS	10" Single Clear USA	11.97in	1.81in	12.95in	13.54in	2.40in	1.85in	28.15oz
LFLB10SAUS	10" Single Amber USA							
LFLB20S	20" Single Clear							
LFLB20SA	20" Single Amber	558mm	46mm	583mm	598mm	61mm	47mm	1268g
LFLB20SUS	20" Single Clear USA	21.97in	1.81in	22.95in	23.54in	2.40in	1.85in	44.73oz
LFLB20SAUS	20" Single Amber USA							
LFLB30S	30" Single Clear							
LFLB30SA	30" Single Amber	811mm	46mm	836mm	851mm	61mm	47mm	1733g
LFLB30SUS	30" Single Clear USA	31.93in	1.81in	32.91in	33.50in	2.40in	1.85in	61.13oz
LFLB30SAUS	30" Single Amber USA							
LFLB40S	40" Single Clear							
LFLB40SA	40" Single Amber	1064mm	46mm	1089mm	1104mm	61mm	47mm	2102g
LFLB40SUS	40" Single Clear USA	41.89in	1.81in	42.87in	43.46in	2.40in	1.85in	74.15oz
LFLB40SAUS	40" Single Amber USA							
LFLB50S	50" Single Clear							
LFLB50SA	50" Single Amber	1319mm	46mm	1344mm	1359mm	61mm	47mm	2666g
LFLB50SUS	50" Single Clear USA	51.93in	1.81in	52.91in	53.50in	2.40in	1.85in	94.04oz
LFLB50SAUS	50" Single Amber USA							

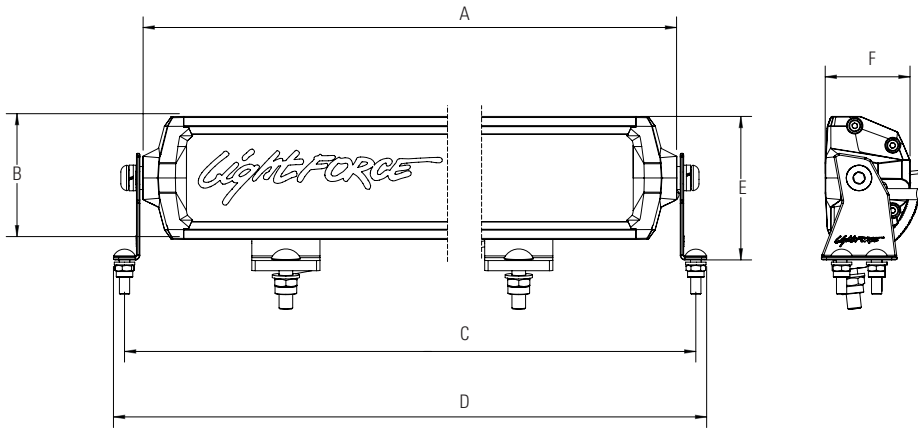
### Amber Lens Bars

Suitable for

### OFF-ROAD USE ONLY.

Refer to your local state or region for compliance laws.

## DUAL ROW DIMENSIONS



SKU	Description	A	B	C	D	E	G	Mass inc. Brackets
LFLB10D	10" Dual Clear							
LFLB10DA	10" Dual Amber	303mm	72mm	330mm	345mm	82mm	49mm	1021g
LFLB10DUS	10" Dual Clear USA	11.93in	2.83in	12.999in	13.58in	3.23in	1.93in	36.01oz
LFLB10DAUS	10" Dual Amber USA							
LFLB20D	20" Dual Clear							
LFLB20DA	20" Dual Amber	559mm	72mm	586mm	601mm	82mm	49mm	1662g
LFLB20DUS	20" Dual Clear USA	22.00in	2.83in	23.07in	23.66in	3.23in	1.93in	58.63oz
LFLB20DAUS	20" Dual Amber USA							
LFLB30D	30" Dual Clear							
LFLB30DA	30" Dual Amber	812mm	72mm	839mm	854mm	82mm	49mm	2302g
LFLB30DUS	30" Dual Clear USA	31.97in	2.83in	33.03in	33.62in	3.23in	1.93in	81.20oz
LFLB30DAUS	30" Dual Amber USA							
LFLB40D	40" Dual Clear							
LFLB40DA	40" Dual Amber	1066mm	72mm	1093mm	1108mm	82mm	49mm	2928g
LFLB40DUS	40" Dual Clear USA	41.97in	2.83in	43.03in	43.62in	3.23in	1.93in	103.28oz
LFLB40DAUS	40" Dual Amber USA							
LFLB50D	50" Dual Clear							
LFLB50DA	50" Dual Amber	1319mm	72mm	1346mm	1361mm	82mm	49mm	3560g
LFLB50DUS	50" Dual Clear USA	51.93in	2.83in	52.99in	53.58in	3.23in	1.93in	125.58oz
LFLB50DAUS	50" Dual Amber USA							

### Amber Lens Bars

Suitable for

### OFF-ROAD USE ONLY.

Refer to your local state or region for compliance laws.

## SPECIFICATIONS

- Broad operating input voltage range:
  - 6" to 30" light bar 10-36V
  - 40" & 50" single row light bar 10-36V
  - 40" & 50" dual row light bar 12-36V
- LED lifespan up to 50,000 hours
- Input cable length 450mm (17.72")
- Waterproof rating IP68
- Operating temperature: -40oC to 63oC.

## TOOLS REQUIRED

- 13mm and 10mm socket and ratchet
- Supplied Allen key.

For more product specifications please visit [lightforce.com](http://lightforce.com)

### IMPORTANT NOTES

1. Before fitting the stainless-steel hardware, it is advised to apply a small amount of anti-seize compound to each mounting bolt.
2. Mounting points vary in design and load capacity. Ensure the light bar is within manufacturer's recommended weight specifications before fitment.
3. Failure to correctly mount your light bar may cause damage to the light bar and vehicle.

### **Amber Lens Bars**

Suitable for

### **OFF-ROAD USE ONLY.**

Refer to your local state or region for compliance laws.

## SIDE BRACKET INSTALLATION INSTRUCTIONS

Stainless steel side brackets are included with all light bars. These side brackets are reversible so can be installed facing in or out depending on the mounting options.

### SINGLE ROW:

1. Attach the side brackets to both ends of the light bar as indicated below (Figure 1)

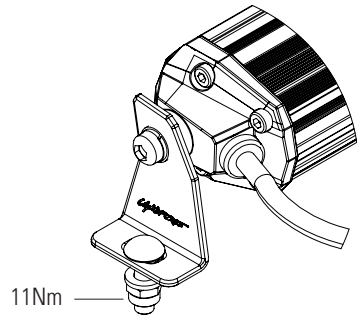
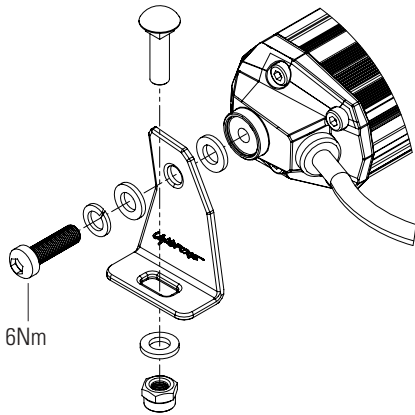


Figure 1

### DUAL ROW:

1. Attach the side brackets to both ends of the light bar as indicated below (Figure 2)

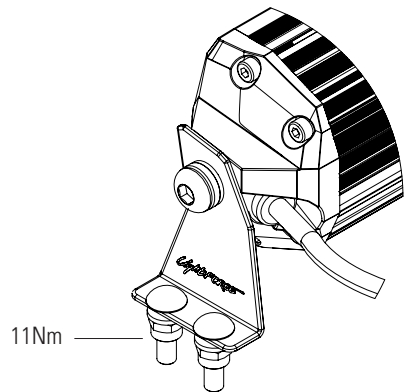
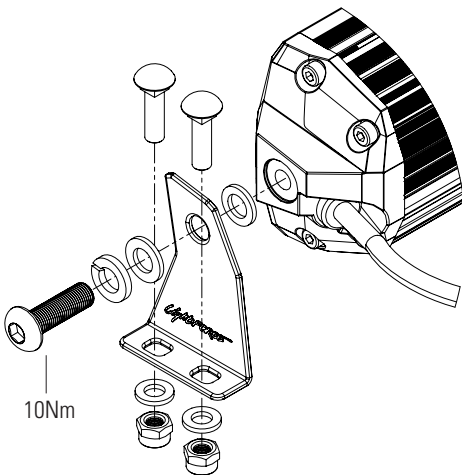


Figure 2

## REAR SLIDE MOUNT INSTALLATION INSTRUCTIONS

To prevent difficulties when installing the slide mount options you **MUST** pre-assemble **before** aligning into the light bar rear housing.

The advised procedure for each slide mount is as follows:

1. Pre-assemble the mount
2. Place the square nut into the rear of the light bar housing
3. Slide the mount into correct mounting position
4. Tighten to correct torque.

### SINGLE ROW

1. Attach rear slide mounts when pre-assembled to the Light Bar as indicated below (Figure 3)

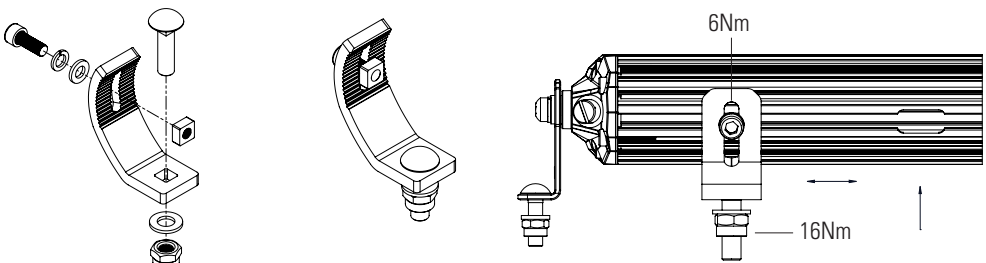


Figure 3

### DUAL ROW

1. Attach rear slide mounts when pre-assembled to the Light Bar as indicated below (Figure 4)

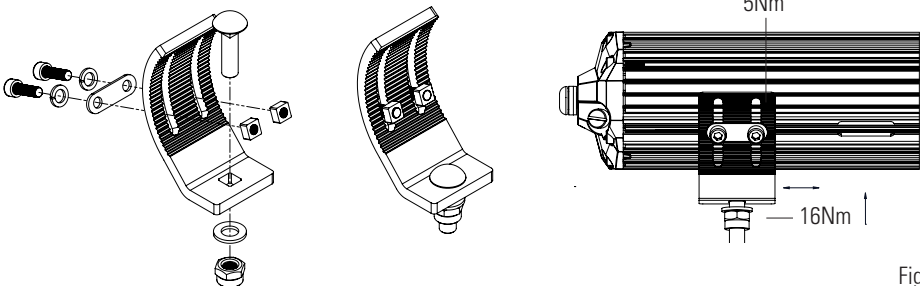


Figure 4

## WIRING INSTALLATION INSTRUCTIONS

Lightforce Viper Light Bars are supplied complete with a smart wiring harness incorporating a 40amp relay, terminated two pin waterproof Deutsch style connector (DT: 20" and below or DTP: 30" and above), inline fuse, 8 pin switch connector and illuminated switch.

1. Remove the main ground (negative) wire from the negative battery terminal

**WARNING:** This may result in the loss of your radio security code and clock settings. Please consult your owner's manual before disconnecting

2. Install the LED Bar onto a suitable mounting surface
3. Find a suitable place within the engine bay (example – inner guard) to mount the relay. Ensure that the Red (+) and black (-) ring terminals reach the appropriate battery terminals
4. Route the dashboard switch loom connector on the LED Bar harness (see Figure 5, item 9) carefully through the vehicle's firewall. Be careful to avoid crushing the connector and ensure the cable is kept away from any heat sources and sharp surfaces
5. Locate a suitable position on the dash and then connect the dashboard switch loom connector on the wiring harness to the dashboard switch loom pictured in Figure 6.

**NOTE:** The notch in the switch loom plug and wiring harness plug must be aligned

6. Connect the red wire with bullet terminal to the high beam circuit positive (Figure 5, item 8)
7. Connect the green wire with bullet terminal to the high beam circuit negative (Figure 5, item 7)

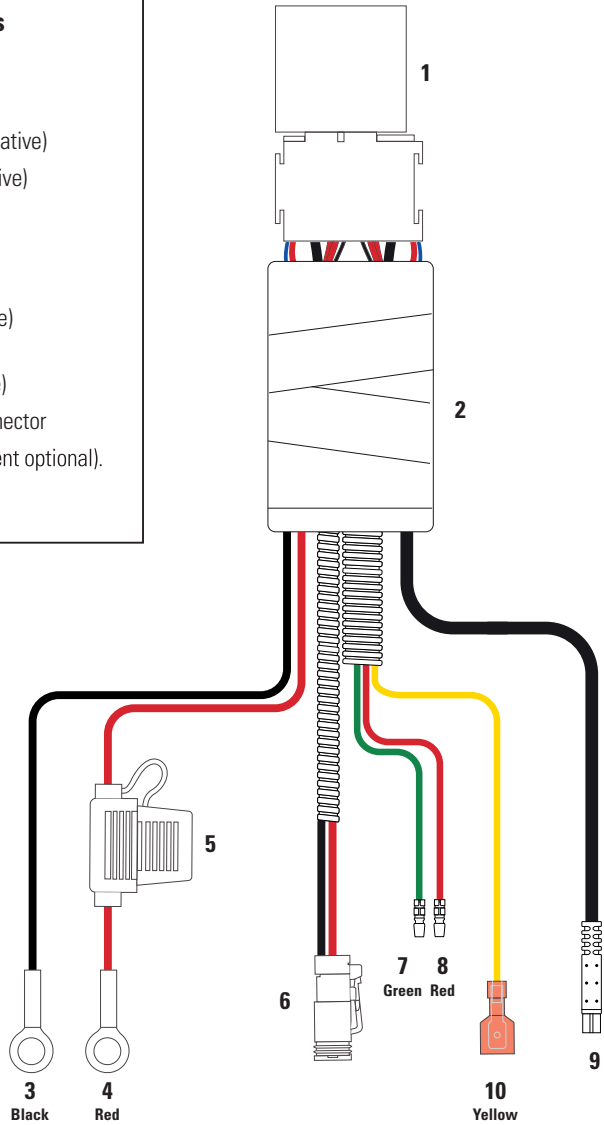
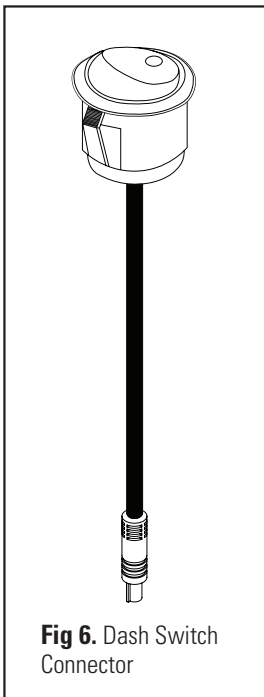
**NOTE:** If using a Lightforce Headlight Patch Harness, connect as directed by the user instructions included with the Lightforce Patch Harness. Refer to [lightforce.com](http://lightforce.com) for compatible headlight patch harnesses

8. If requiring switch illumination for Lightforce factory style switches, connect the yellow wire (Figure 5, item 10) to the park light or low beam circuit positive
9. Route the insulated sleeved wires from the relay to your installed Light Bar and connect the two-pin waterproof Deutsch style plug to the Light Bar connector. Ensure that the cable does not touch the radiator or come in contact with any sharp surfaces
10. Secure all excess wires using cable ties
11. Connect the red ring terminal to the positive battery terminal (Figure 5, item 4)
12. Connect the black ring terminal to the negative battery terminal, (Figure 5, item 3) then reconnect main ground (negative) wire to the negative battery terminal
13. Test.



### Fig 5. Driving Light Harness

1. 40 Amp Relay
2. Insulated sleeved wires
3. Battery connector Black (negative)
4. Battery connector Red (positive)
5. 15 or 30 amp fuse
6. LED Bar connector
7. High beam pickup wire with bullet terminal (negative)
8. High beam pickup wire with bullet terminal (positive)
9. Dashboard switch loom connector
10. Dash illumination wire (fitment optional).



**NOTE:** USA Light Bars do not include the high beam pickup wire (Figure 5, Items 7 & 8).

## WARRANTY CONDITIONS FOR AUSTRALIA

“Lightforce” means Lightforce Australia Pty Ltd  
ABN 54 069 439 774 Address: 11 Manton Street,  
Hindmarsh, SA, 5007. Telephone: +61 8 8440 0888.  
Email Address: sales@lightforce.com

“Lightforce Affiliates” means Lightforce, Lightforce related bodies corporate (within the meaning of the Corporations Act 2001), and their respective employees, officers, agents, and contractors.

“Warranty Period” means:

Lightforce products claimed for repair or replacement under the conditions of a defect in materials or workmanship within normal use and conditions, are valid for the time period of three (3) years from the date of purchase; except accessories, switches, made-to-order items, custom built items, brackets, fascia and harness, bulbs, batteries and mounts which is one (1) year from the original date of purchase specified on your sales receipt or invoice.

Only Lightforce products and parts which remain unaltered from their factory supplied design are eligible for warranty. Modifications made to the product, any collision or impact damage of any kind, product tampered in any manner, including poor installation will void warranty.

### REPAIR OR REPLACEMENT OF A PRODUCT OR PARTS:

A replacement product or part is warranted for the balance of the period remaining on the original product contract. A warranty replacement/repair does not constitute a new warranty period of (3) years or (1) year whichever is the correct warranty period. Products and parts presented for repair or replacement may be replaced by products of the same type, or superseding designs.

Goods presented for repair may be replaced by refurbished goods of the same type rather than being repaired. Refurbished parts may be used to repair the goods.

### MAKING A CLAIM:

Under this warranty and unless Lightforce otherwise agrees in writing, you bear the cost of claiming under this warranty, Lightforce will however, bear the reasonable cost of transporting the product to Lightforce and returning the product to you.

Lightforce must assess warranty claims before a claim can be granted unless otherwise arranged for and by Lightforce.

To make a claim you will need;

- The receipt of purchase or similar proof AND
- The product being claimed for AND
- Have registered the claim with Lightforce by;

Calling **1800 03 03 08** and speaking with a warranty support officer OR

By emailing [support@lightforce.com](mailto:support@lightforce.com)

A support officer will raise a case number and provide you with any necessary labelling and freight paperwork to process the claim.

### USE OF PERSONAL INFORMATION:

This warranty will not apply if you do not supply to us or to our Lightforce Affiliates information that we reasonably request to enable us to perform our obligations under this warranty. You have the right to access your personal contact information and request correction of any errors in it pursuant to the Privacy Act 1988 by contacting Lightforce.

## **STATUTORY RIGHTS:**

Our goods come with guarantees that cannot be excluded under the Australian Consumer Law. You are entitled to a replacement or refund for a major failure and compensation for any other reasonably foreseeable loss or damage. You are also entitled to have the goods repaired or replaced if the goods fail to be of acceptable quality and the failure does not amount to a major failure.

## **LIMITATION OF LIABILITY:**

1. Where permitted, or not prohibited, under any law, including under the Australian Consumer Law, Lightforce and Lightforce Affiliates' liability in respect of any defect in materials or workmanship or in respect of a product which is not otherwise of acceptable quality (within the meaning of the Australian Consumer Law), is limited at the option of Lightforce, to:
  - a. The replacement or repair of the product,
  - b. The payment of the cost of replacing or repairing the product; or
  - c. The payment of the cost of acquiring an equivalent product.
2. Accordingly, to the extent permitted or not prohibited under any law (including the Australian Consumer Law):
  - a. neither Lightforce nor any Lightforce Affiliates are liable under any circumstances (including in contract, negligence or other tort, or under any other legal doctrine) for third party claims against you for damages; special, incidental, punitive, indirect or consequential damages, including but not limited to lost profits, business revenue, goodwill or anticipated savings; and
  - b. in no case does the total liability of Lightforce, Lightforce Affiliates, or their respective suppliers, resellers or service providers to any person for damages from any cause (including in contract, negligence or other tort, or under any other legal doctrine), in connection with the supply of a product exceed the lesser of the actual direct damages of that person and the amount paid for the product by that person.

The foregoing limitations do not apply to damages for bodily injury (including death), damage to real property or damage to tangible personal property for which Lightforce is liable under any non-excludable law.

# LightFORCE®



**SCAN** to find out more about the  
range of VIPER Light Bars and accessories.

**For warranty information and to register your product for  
warranty purposes, visit [lightforce.com/warranty](https://lightforce.com/warranty)**

## **LIGHTFORCE AUSTRALIA PTY LTD**

11 Manton Street, Hindmarsh SA 5007 Australia  
[www.lightforce.com](https://www.lightforce.com) • Email: [sales@lightforce.com](mailto:sales@lightforce.com)  
Australia Telephone: 1800 030 308 | Fax: 08 8346 0504  
International Telephone: +61 8 8440 0888 | Fax: +61 8 8346 0504

All logos and images are subject to relevant trademark and copyright protection. Copyright © Lightforce Australia Pty Ltd 2024. Data and specifications may be subject to change without notice. Lightforce Australia Pty Ltd shall not be liable for damage, malfunction, failure resulting from accident, misuse, misapplication, unauthorised repair, neglect, modification, unauthorised or non standard replacement parts, accessories, bulbs, batteries or voltage or operation of the product beyond its technical and or environmental specification.

LEDBARSINS-V3