

USER GUIDE.

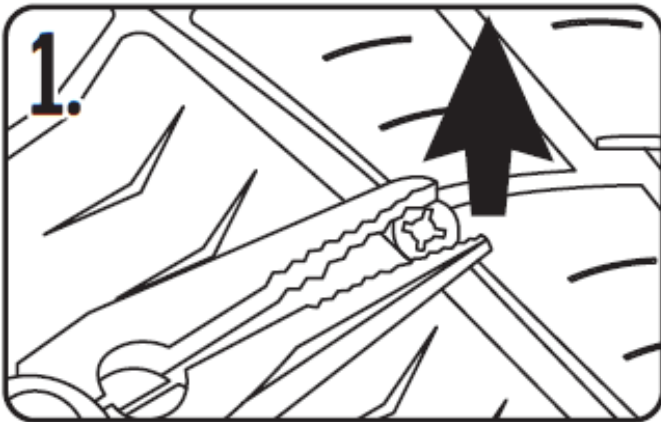
TJM TYRE REPAIR KIT

TAKE THE LEAD.

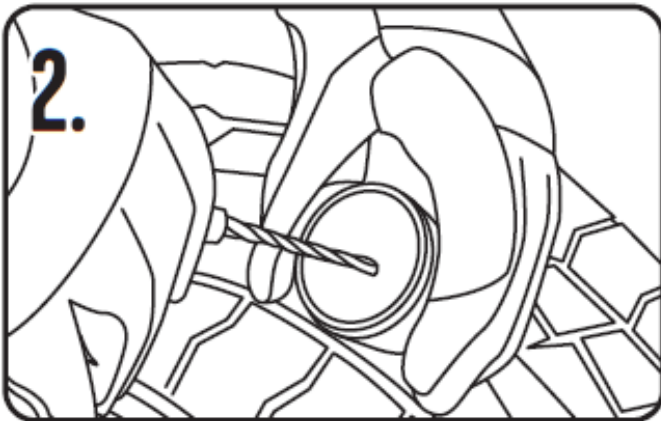
📱📺📄 TJM4x4 | www.tjm.com.au

TJM
4X4 EQUIPPED

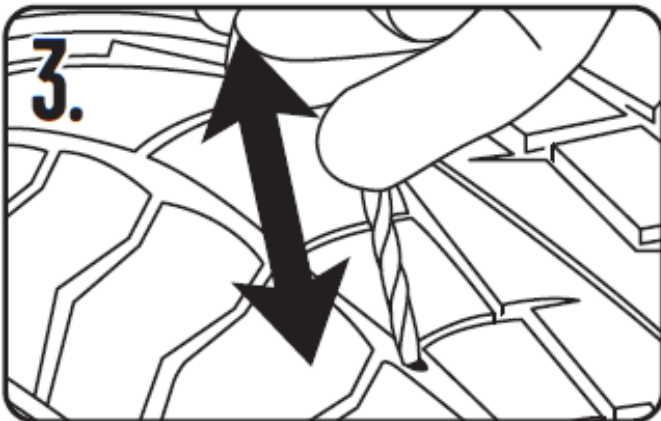
INSTRUCTIONS.



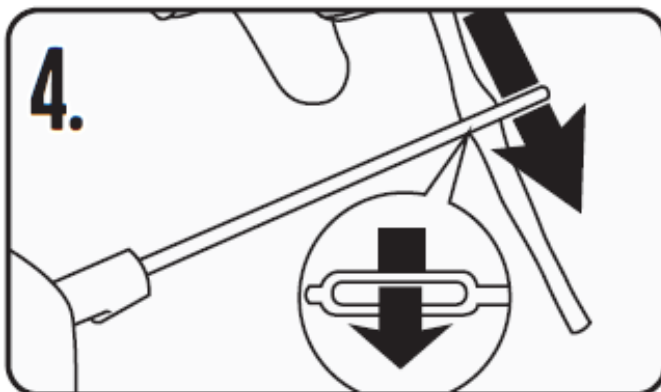
Use pliers supplied to remove any obstructions in the damaged area of the tyre.



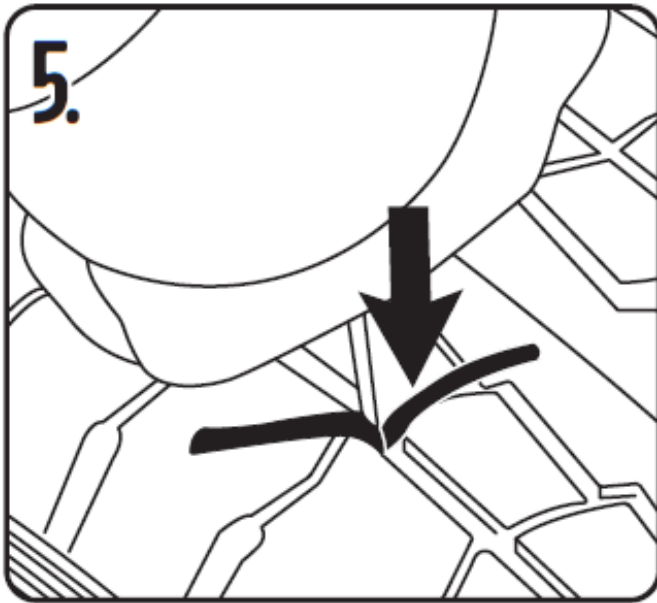
Apply the lubricant supplied to the shaft of the rasp. This will assist when the rasp is inserted into the hole created by the removed obstruction.



Clean out the hole using the rasp tool. Inserting the rasp tool into the hole a few times will sufficiently clean the hole and separate the steel belts.

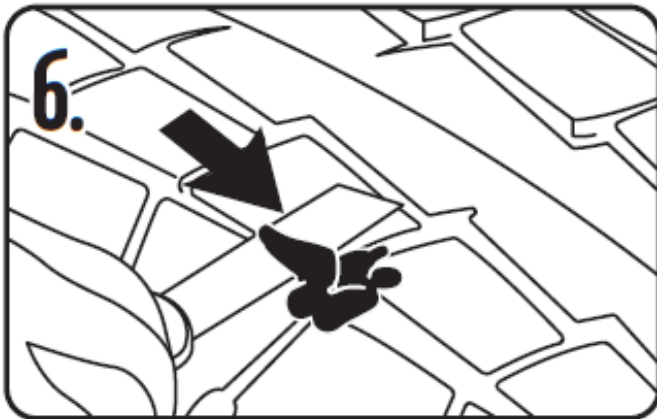


Thread the repairing cord through the eye of the needle tool. Ensure that equal parts of the cord are either side of the needle. Lubricant can be added to the tip of the tool to assist with insertion.

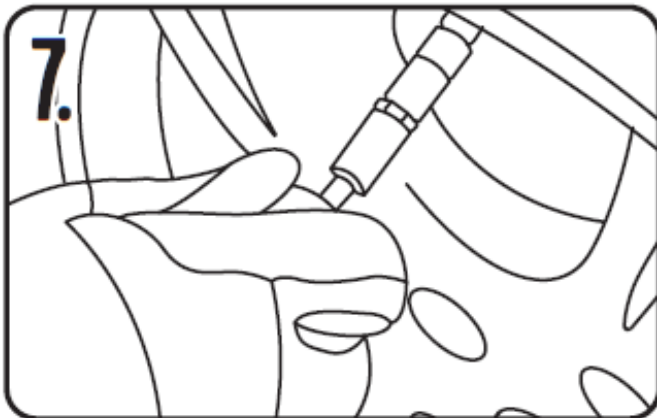


Press the needle tool and cord into the rasped out hole in the tyre. A small amount of cord should remain exposed from the tyre.

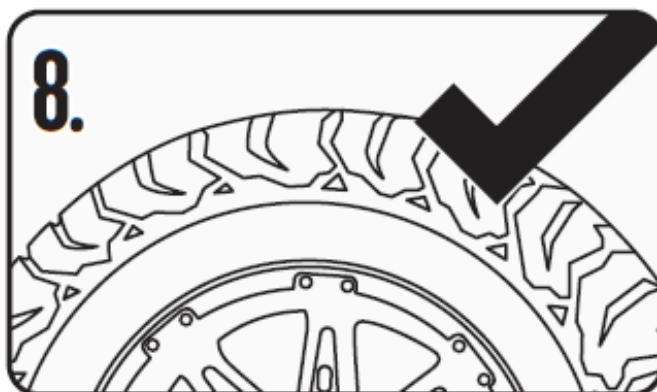
Now remove the needle tool by slightly pulling up on the handle. The cord should remain in the tyre sealing the hole.
Note: Do not twist the needle tool in this process.



With the knife supplied trim any excess cord protruding from the tyre.



Reinflate the tyre with your TJM compressor to the desired pressure and check the repaired area for any leaks.



Inspect the repair regularly as the seal is only a temporary fix. The tyre should be professionally repaired as soon as a possible.

Distributed by TJM Australia
17 Johnstone Road Brendale Q 4500

