

# USER GUIDE.

**TJM AWNING ROOM**

**TAKE THE LEAD.**

Facebook Instagram YouTube | [www.tjm.com.au](http://www.tjm.com.au)

**TJM**  
4X4 EQUIPPED

## SPECIFICATIONS.

Size.	2.0m Awning Room.	2.5m Awning Room.
Weight.	14kg	15kg
Floor size.	228 x 250cm (W x D)	277 x 250cm (W x D)
Materials.	<ul style="list-style-type: none"><li>• Room: 300D Ripstop Polyester Canvas.</li><li>• Floor Fabric: 250D PVC.</li><li>• Mesh Screen Doors: Superfine Mesh.</li></ul>	
Features.	<ul style="list-style-type: none"><li>• Designed to complement TJM 2.0 and 2.5 Awning.</li><li>• 300D Ripstop Polyester Fabric with PU2000mm.</li><li>• Waterproof removable zippered PVC bucket floor.</li><li>• 3 x Entrance mats.</li><li>• 2 x Mesh internal storage pockets (Max 1.0kg per pocket).</li><li>• 1 x Extra wide front door, 2 x Side doors, and 1 x Rear entry vehicle access door.</li><li>• Front and Side doors include super fine zippered mesh screens.</li><li>• Eyelets on front and side doors for easy conversion to awnings with poles (2 x tent poles included).</li><li>• 5 x D Rings to hang your gear.</li><li>• 2 x Cable access holes to room.</li><li>• Includes roof support poles and storage bag.</li></ul>	
Parts included.	<ul style="list-style-type: none"><li>• 1 x Awning Room.</li><li>• 1 x Zippered Floor.</li><li>• 1 x Roof Support Pole.</li><li>• 10 x Ground Pegs.</li><li>• 2 x Guy Rope &amp; Tensioner</li><li>• 1 x Storage Bag.</li><li>• 2 x Tent Poles.</li></ul>	

### WARNING.

- Keep all flames and heat sources away from awning room fabric.
- Do not operate any fuel burning devices inside awning room.
- Do not smoke in awning room.
- Be aware of any airborne burning embers that may come in contact with awning room.
- Keep fire extinguisher or bucket of water nearby.

### CARE INSTRUCTIONS.

- Keep away from sharp edges, hot surfaces, or hazardous chemicals.
- Clean with light soapy water.
- To prolong life of product, store away from direct sunlight, wet, or humid conditions.
- Dry product completely before storing.

### WARRANTY.

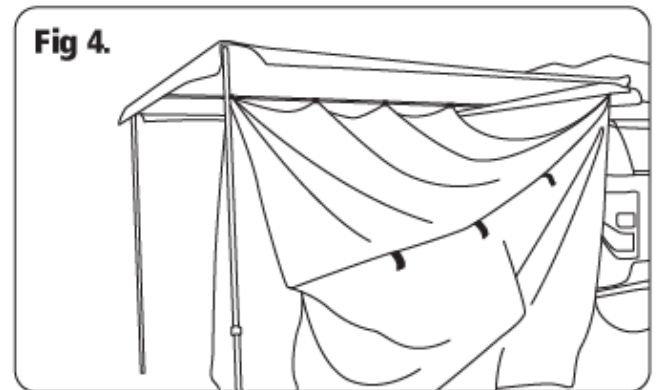
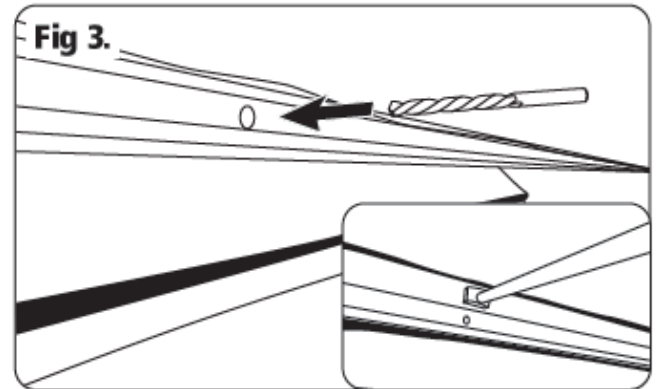
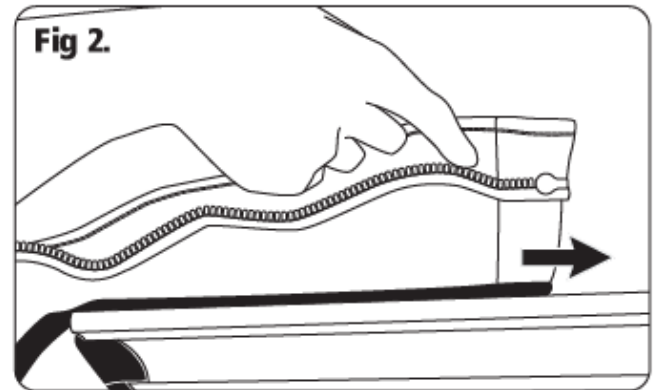
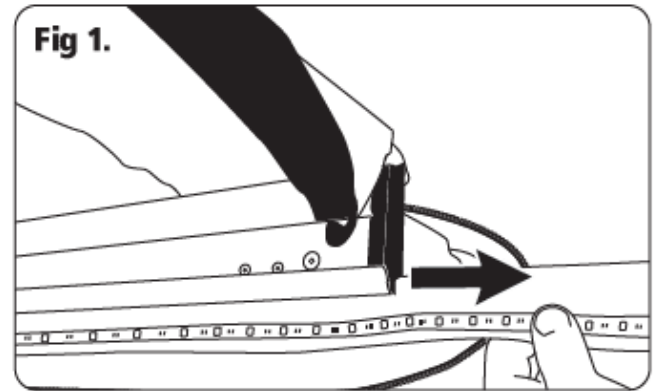
For product warranty refer to our website [www.tjm.com.au](http://www.tjm.com.au).

## SET UP.

1. Once TJM awning has been erected, remove LED light strip from sail track (if one is fitted). [Fig 1.]
2. Lay Awning Room on ground & determine front & rear of awning room. Top front has detachable section via zip.
3. Unzip top front detachable section & slide into the front sail track. [Fig 2.]
4. Take top rear of awning room & slide the piping to the top of rear awning extrusion.
5. If fitting the Roof Support Pole for first time, an 8mmØ will need to be drilled in the middle of the front awning extrusion to allow support pole pin to be installed. [Fig 3.]
6. Install roof support poles to front & rear awning extrusions.
7. Attached hook & loop straps from top of awning room roof to support poles. [Fig 4.]
8. Zip top front detached section to awning.
9. Attach hook & loop strap to horizontal poles & vertical poles on awning. [Fig 5.]
10. Locate orange markers on the floor & bottom of awning room, align zip & attach floor to awning room.
11. Locate entrance mats & attach using hook & loops.
12. Peg bottom of Awning room as required.

## PACK AWAY.

1. Check fabric is dry & free of dirt & debris.
2. Reverse "Set Up" process.



**Distributed by TJM Australia**  
17 Johnstone Road Brendale Q 4500

